



INTERNATIONALE KOMMISSION DER DETEKTIV-  
VERBÄNDE

INTERNATIONAL FEDERATION OF ASSOCIATIONS  
OF PRIVATE DETECTIVES



MINUTES of Executive Meeting 2023-11-03

Minutes of Executive Meeting of the Internationale Kommission der Detektiv Verbände held at Holiday Inn Hotel, Munich City Centre, Germany on Friday the 03<sup>rd</sup> November 2023 at 14:00 hours.

1 Introduction and welcome by the Secretary General –

- a. Attendees were recorded on the register which is available on request from the General Secretariat.
- b. The board in attendance were: **Tony Imossi** – Secretary General (SG) and **George Hirtl** – Vice Secretary General (VSG).

2 Apologies were received and noted from: Uffe Bodenholt (Denmark), Jussi Huusko (Finland), Jean Schmitt (France & WAD), Maria Bamburu (Romsnia), Alex Auslander (Israel), [unreadable] (Ukraine)

3 Minutes of the Committee meeting held on 07<sup>th</sup> October 2022 in Budapest Hungary were proposed as a true record by **George Hirtl** (Austria) and seconded by **David Sanmartin** (APDPE), the proposal was carried.

4 There were no matters arising from the Minutes.

5 Secretary General’s Report: The SG gave a presentation on the current position on the ABI’s on-going work in drafting a UK GDPR Code of Conduct.

6 The Vice Secretary General Report:

[unreadable]

- a. **Bastian Moritz** (Germany) gave a presentation on the final version of ISO 37008 and its publication available on-line. See narrative annexed at “A”. It was explained how the ISO could affect national standards,



**INTERNATIONALE KOMMISSION DER DETEKTIV-  
VERBÄNDE**

**INTERNATIONAL FEDERATION OF ASSOCIATIONS  
OF PRIVATE DETECTIVES**



for example in the UK, were ISO 37008 adopted a footnote could be added referencing BS102000 and/or the UK GDPR Code of Conduct if and when approved. The IKD common minimum standards could also be referenced. The IKD influenced the ISO for example including external investigating by an internal investigation department and making sure there was nothing in the standard that would make it difficult for investigators in the private sector when receiving outsourced instructions from a client (internal investigation department). The standard will be reviewed regularly.

- 7 To consider the income and expenditure Accounts for the year ending 31<sup>st</sup> December 2022 and to adopt the Accounts together with the Reports of the Treasurer and Auditor.
  - a. The Treasure's Report was read out by the SG and is annexed hereto, together with the Income & Expenditure and Balance Sheet as "5".
  - b. The Accounts had been audited by **John Grottum** (Norway) and he reported all was in order.
  - c. **David Sanmartin** (APDPE) proposed acceptance of the Accounts, seconded by **George Hirtl** (VSG) and was carried with two votes registered against by **Luciano Tommaso Ponzi** (Italy) on behalf of FEDERPOL and **Andreas Schweitzer** (Austria) on behalf of Österreichischer Detektiv-Verband (ÖDV). Both votes against were in stated by each to relate to the vote in 2022 concerning the IKD support of the ABI proposed UK GDPR Code of Conduct; neither member offered an explanation why they were voting against the Accounts.
- 8 To consider the Reports of the Member Associations. There were no Reports requiring discussion.



**INTERNATIONALE KOMMISSION DER DETEKTIV-  
VERBÄNDE**

**INTERNATIONAL FEDERATION OF ASSOCIATIONS  
OF PRIVATE DETECTIVES**



9 Any Other Business:

- a. **Juan Carlos Arias** (Spain) gave a presentation on the historical fraud case based on his book "Franco's Forger".

10 To fix date and venue for future meetings:

- a. The IKD will next meet in Valencia, Spain in March 2024.
- b. For 2025, the SG asked for a show of hands for those who would support the meeting joining the WAD on the 100<sup>th</sup> anniversary in Chicago, USA. Only 4 delegates were in favour but none against. **Bernarda Škrabar Damjanović** (Slovenia) conveyed a request from **Maria Bamburu** (Romania) that the IKD meet in Bucharest in 2025 with the Summer School. The IKD board will take into consideration the options and make a decision in due course.

Close of meeting



**INTERNATIONALE KOMMISSION DER DETEKTIV-  
VERBÄNDE**

**INTERNATIONAL FEDERATION OF ASSOCIATIONS  
OF PRIVATE DETECTIVES**



SIDENOTE:

Prior to the meeting BUDEG had organised a seminar on social media harvesting.

The presentation [\[link\]](#) attached as Annex "71 ž'cb' A U'hY[ c'Ug' 91 "



IKD Annual General Meeting 2023  
Münich, Germany on 2-5 November 2023

**Treasurer**  
Uffe Bodeholt  
Tel.: +45 20627733  
Email: [treasurer@i-k-d.com](mailto:treasurer@i-k-d.com)  
Web: [www.i-k-d.com](http://www.i-k-d.com)

**Profit and loss account IKD, in Euro  
January 1. – December 31. 2022**

	Year 2022	Year 2021
<b>REVENUE</b>		
Contribution members	9.113,37	500,00
Provisional fee Portugal 2021	-	<b>300,00</b>
	<b>9.113,37</b>	<b>800,00</b>
<b>EXPENSES</b>		
ABI for GDPR	17.000,00	-
Ukraine Red Cross	2.055,00	-
Account Secretary General	1.409,33	2.410,06
Account Vice Secretary General	2.513,29	-
Account Tressurer	134,30	1.123,60
Internet cost (hosting)	-	204,00
Bank charges	415,04	335,24
	<b>23.526,96</b>	<b>4.072,90</b>
<b>Result</b>	<b>-14.413,59</b>	<b>-3.372,90</b>



# INTERNATIONALE KOMMISSION DER DETEKTIV-VERBÄNDE

The International Umbrella Body for Investigations in the Private Sector

## Balance December 31. 2022, in Euro

### Assets

PostFinance bank	29.913,81	44.040,70
Paypal, transf. bank 14/3, 274,25	-	286,50
Cash transferred to bank 15/12	-	300,00
ZAD Shares	700,00	700,00
Balance BDD	500,00	1.000,00
	<b>31.113,81</b>	<b>46.327,27</b>

### Liabilities

Equity primo	45.527,40	48.800,30
Result 2022	<b>-14.413,59</b>	<b>-3.272,90</b>
Equity ultimo	<b>31.113,81</b>	<b>45.527,40</b>
Contribution paid in advance	-	799,87
	<b>31.113,81</b>	<b>46.327,27</b>

Copenhagen 22. October 2023

Uffe Bodeholt  
Treasurer



=BH9F B5H=CB5@9`? CAA =GG=CB`89F`89H9?H=J!`  
J 9F 6s B89`



=BH9F B5H=CB5@: 989F 5H=CB`C: `5GGC7=5H=CBG``  
C: `DF =J 5H9`89H97H=J 9G

To the General Assembly Budapest  
October 6.-9.2022

; YbYfU`GYWYHJfm`  
' &) `7]mFcUX`  
@cbXcbž 97%J`%@>  
9b[ `UbXžI` ?  
HY". Ž ((!, (!) \$- (!\$(',`  
A cV. Ž ((!++! \*, %! \$% \$`  
: Ul. Ž ((!&\$!+, '!' '\$-`  
9a U]. [gYWYHJfmYbYfU`4`!`!X"Vča`](#)  
K YV. `k k k"!`!X"Vča`

Cg`cž`&\*"`-`"&\$&&`

## Audit of accounts

I have audited the IKD accounts for the year 2022

The annual accounts consist of accounts, balance sheets and notes and have been submitted to IKD's board. The inspection did not reveal any errors or omissions.

**John Grottum**  
NFES



[BACK TO PAGE 1](#)

[SKIP TO MALTEGO](#)

# INVESTIGATION OF WHITE-COLLAR CRIMES WITH MODERN OSINT TOOLS



**COSTANZA  
PIRAS**

Social Links OSINT  
Analyst





# ABOUT SOCIAL LINKS

## DATA-DRIVEN INVESTIGATIONS

Social Links is a Global OSINT solutions developer since 2015.

With our groundbreaking AI-powered products, we empower investigators and security professionals to effectively conduct data driven investigations.



FROST & SULLIVAN



FROST RADAR LEADER  
**OSINT 2023**

**100+**  
**EMPLOYEES**

**3 OFFICES:**

**HQ** THE UNITED STATES

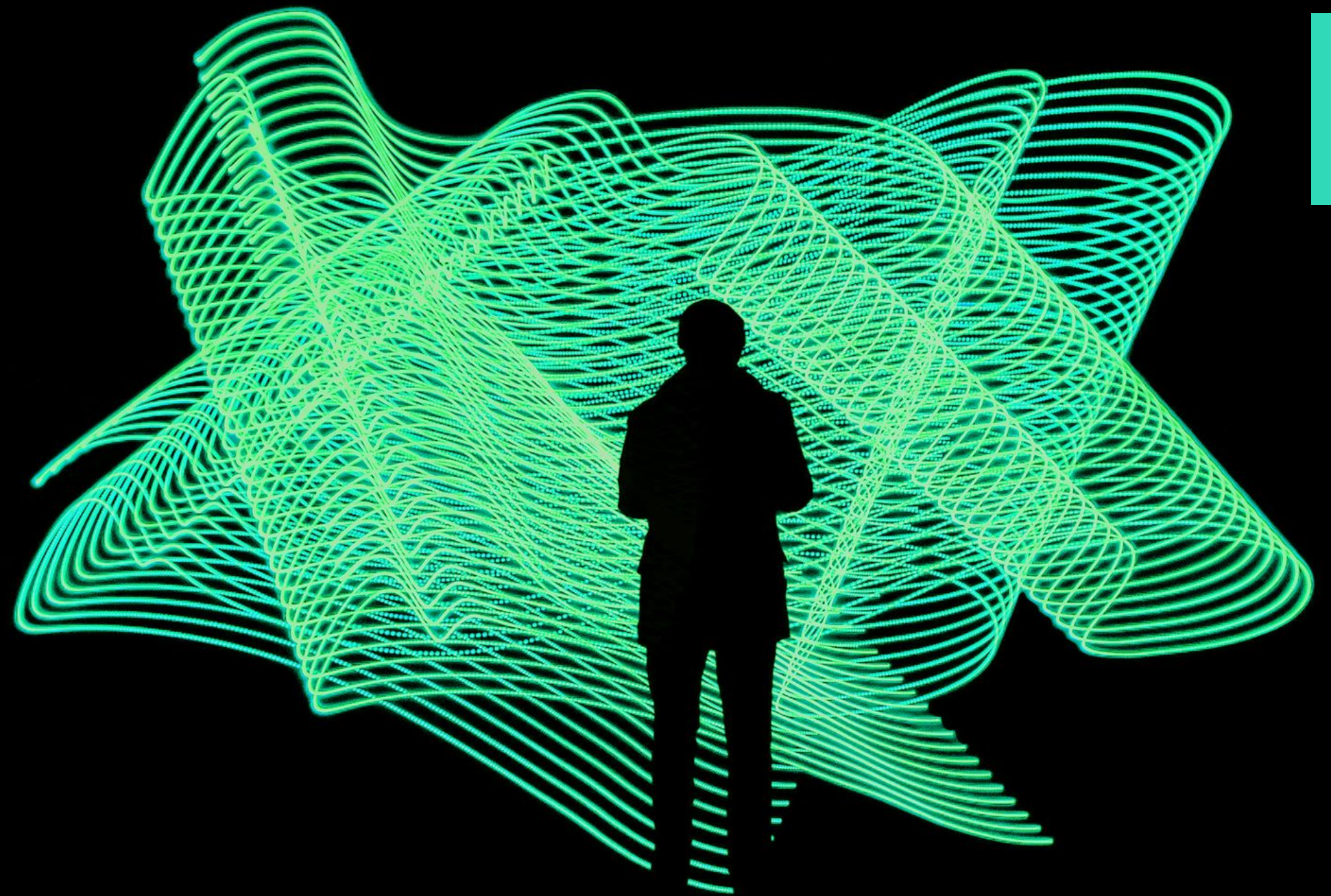
**EU BRANCH** NETHERLANDS

**EU R&D CENTRE** LATVIA

# COE - WHAT WE DO

Social Links empower analysts and investigators to construct clear, complete, and accurate intelligence out of huge volumes of data from open sources, including major social media platforms, messengers, blockchains, and the Dark Web

**Center of Excellence** is a team of OSINT analysts and investigators. In CoE, we conduct investigations both for our clients and on a free basis. Our goal is to improve our products, develop the expertise within the company, and of course share it with the community.

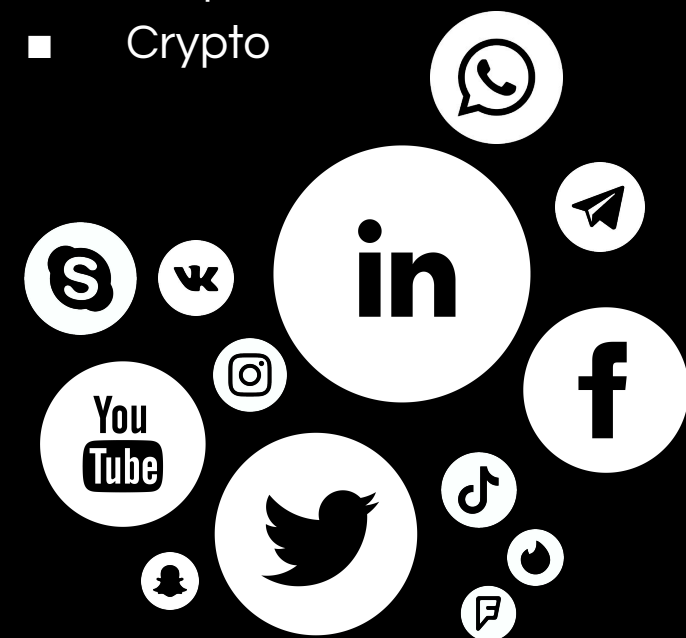


# FULL CYCLE OF INVESTIGATIONS

## DATA GATHERING

Get real-time data from 500+ open sources

- Social media
- Open sources
- Messengers
- Darknet
- Corporate
- Crypto



## DATA ANALYSIS

Using advanced technologies and methods

- Normalization
- Transformation
- Matching
- Enrichment
- ML & AI Analysis

## DATA VISUALIZATION

With powerful and intuitive visualisation tools

- Graphs
- Tables
- Maps
- Media
- Dashboards
- Reports

## DATA APPLICATION

With advanced models and reports

- Background checks
- Target identification
- Digital Footprinting
- Connection analysis
- Group structure identification
- Criminal Investigations
- Fraud Investigations
- Data Leak Detection
- And many more

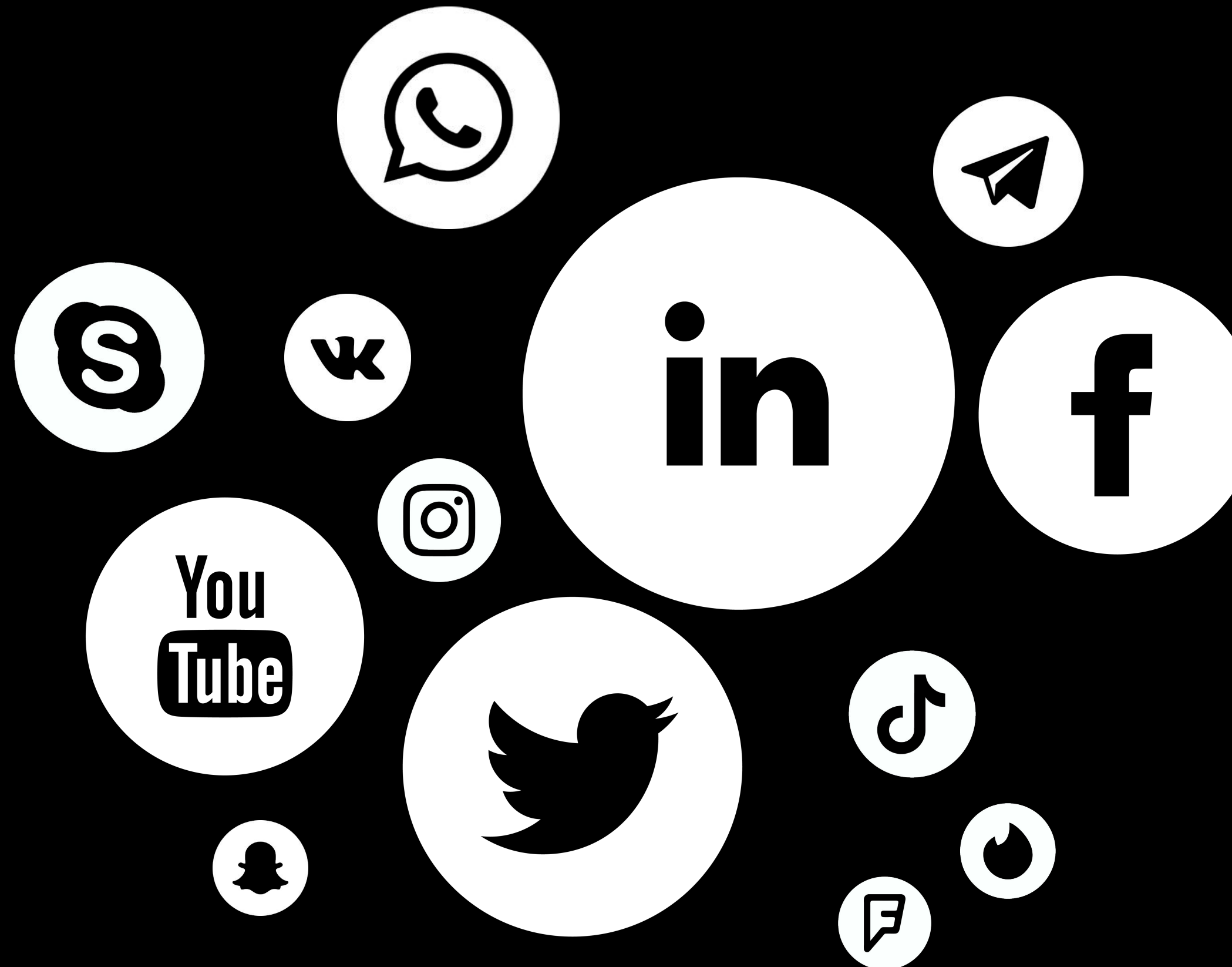
# DATA SOURCES

Get live information from  
over 500 data sources

- Social media
- Open sources
- Messengers
- Darknet
- Corporate
- Crypto

**500+**  
DATA  
SOURCES

**1000+**  
SEARCH  
METHODS



# SL PRO DATA COLLECTORS AND AI TRANSFORMS

**1000+ METHODS TO COLLECT DATA FROM OVER 500 SOURCES INCLUDING:**



Open web



Social media



Messengers



Darknet



Corporate registers



Crypto

**1.3 BILLION IDENTITIES**

(email and IP addresses, phone numbers, names, aliases, companies, crypto-wallets, geolocations, etc.)

**MACHINE-LEARNING ALGORITHMS INCLUDING**

**TEXT ANALYSIS**

 **LANGUAGE TRANSLATION**

Quick machine translation accessible from within the tool itself.

 **HATE SPEECH DETECTION**

Find and identify hate and toxic language from within a selected source.

 **SENTIMENT ANALYSIS**

Aggregate the social attitude of a given group.

**IMAGE PROCESSING**

 **FACIAL RECOGNITION**

Find an individual across a range of visual content even if the subject's image has changed.

 **IMAGE OBJECT DETECTION**

Automatically scan a library of images for a particular item such as a gun, a car, a ship, and many others.

 **NAMED ENTITY RECOGNITION (NER)**

Break down a text into discrete object categories.

# TECHNOLOGIES OF TOMORROW

Our groundbreaking solutions are packed with the latest ML models which are already **built into** Sociala Links Professional and available to any user

## **FACIAL RECOGNITION**

Identify a given individual from masses of visual content. Our machine learning models do the hard work so you don't have to.

## **LANGUAGE TRANSLATION**

Quick machine translation accessible from within the tool itself.

## **HATE SPEECH DETECTION**

Find and identify hate and toxic language from within a selected source.

## **IMAGE OBJECT DETECTION**

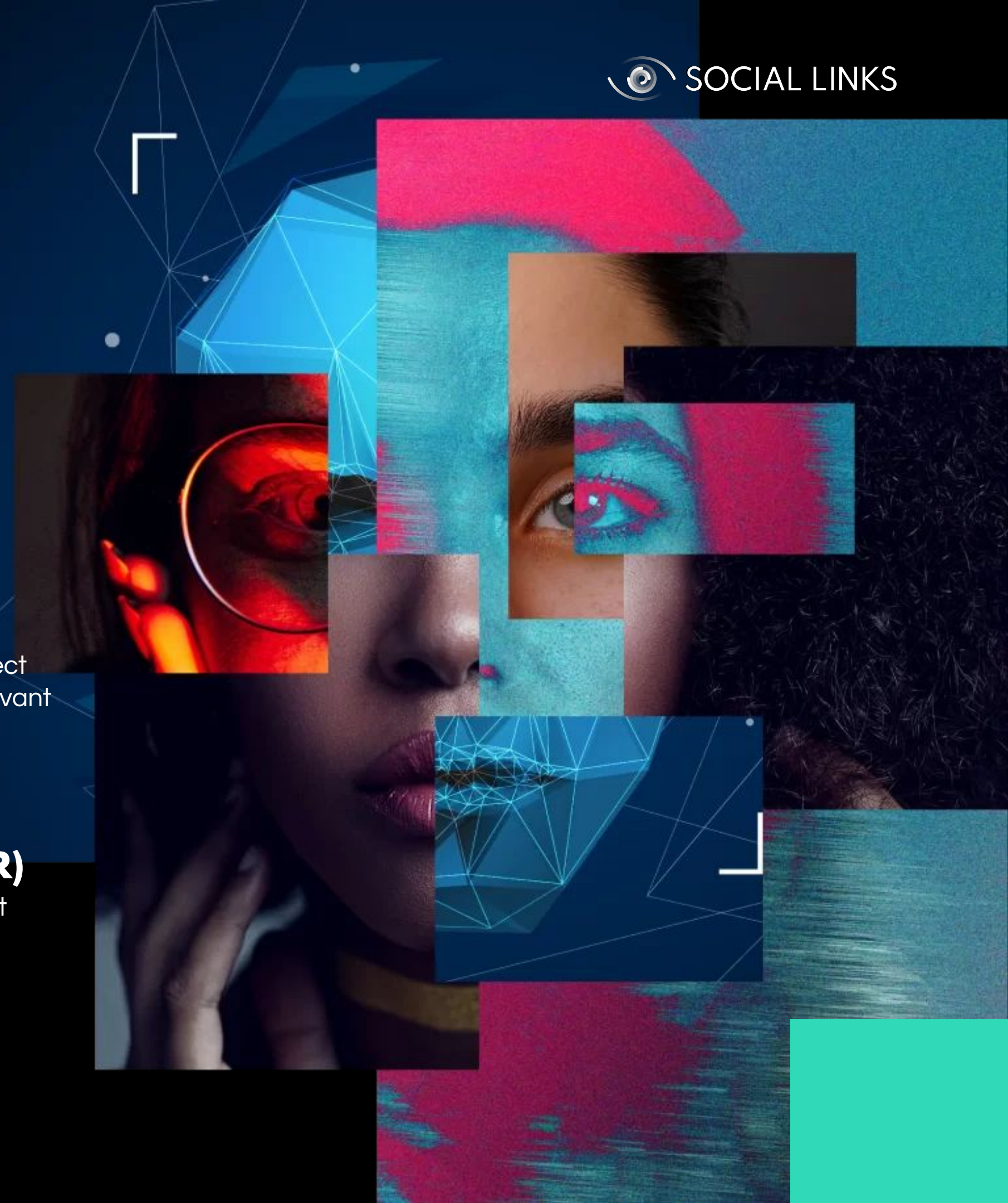
Find the presence of a particular object from a wide selection of images. Relevant objects might be weapons or flags.

## **NAMED ENTITY RECOGNITION (NER)**

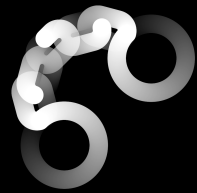
Break down a text into discrete object categories.

## **SENTIMENT ANALYSIS**

Aggregate the social attitude of a given group.



# USE CASES



## LEAS

Criminal investigations

Anti-human and arms trafficking

Counter-terrorism

Financial Fraud

Anti-money laundering

Blockchain analysis

Darkweb analysis



## PRIVATE INVESTIGATIONS

Due diligence

Evidence collection

Contractor check

Background check

Asset tracing

Financial Fraud



## CYBERSECURITY

Threat intelligence

Incident response

Exposure assessment

Penetration testing

Data leak detection

Cybercrime investigations

Blockchain analysis

Darkweb analysis



## CORPORATE SECURITY

Due diligence

Contractor checks

Background check

Financial Fraud

Anti-money laundering

Asset tracing

Brand intelligence

Competitive intelligence



## MILITARY AND GOVERNMENT

Emergency response

Criminal investigations

Counter-terrorism

Anti-human and arms trafficking

Social influence and astroturfing

Intelligence

Cyberwarfare

Darkweb analysis

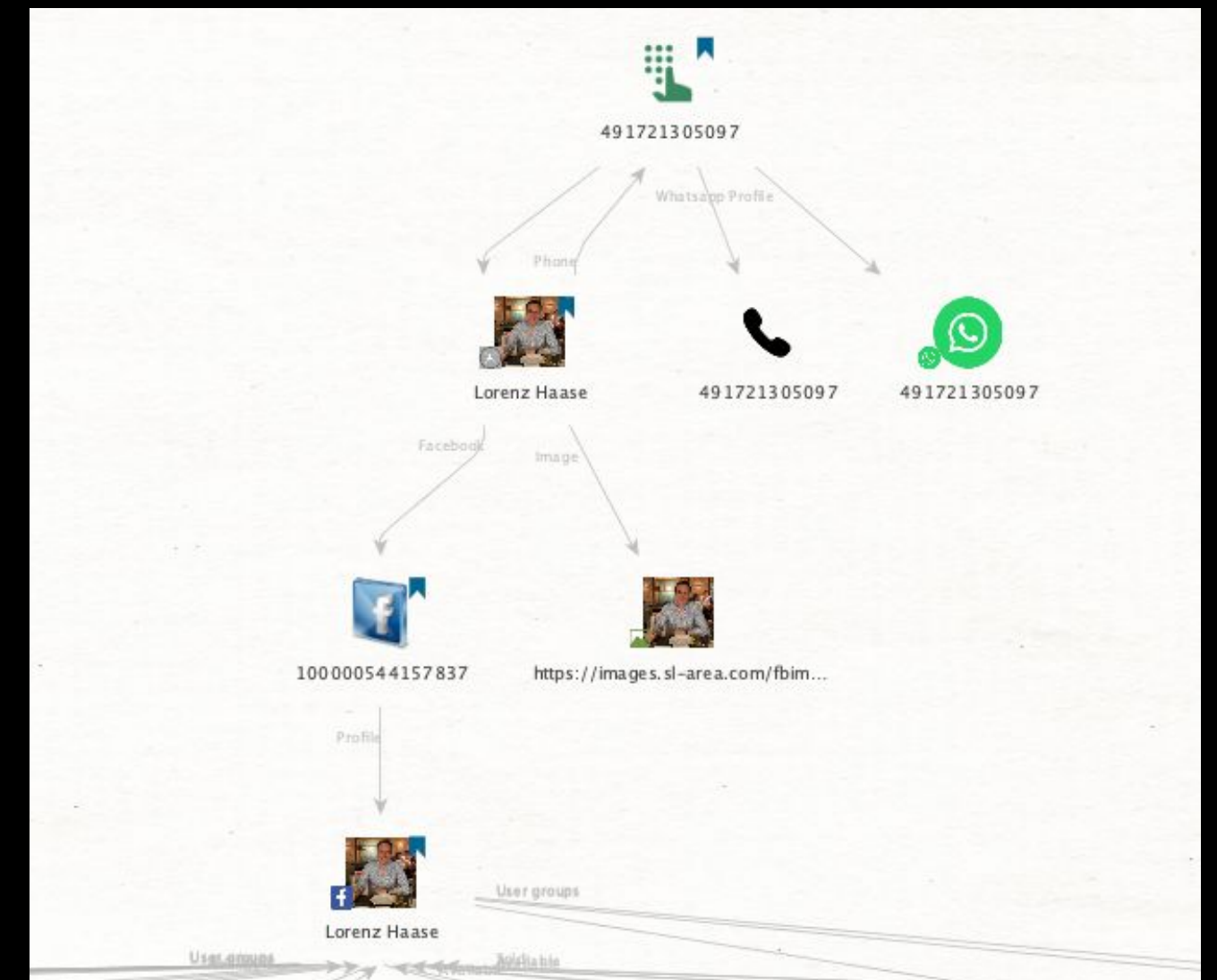
# 360 RESEARCH OF POI

Investigation on a junior consultant at Roland Berger strategic management consulting firm

The case demonstrates how a phone number or an email address can be used in a minute to obtain the social media and more informations about a person of interest

The goals:

- Finding people in the same network of a person;
- Dive deep into a Facebook profile to get information about a person;





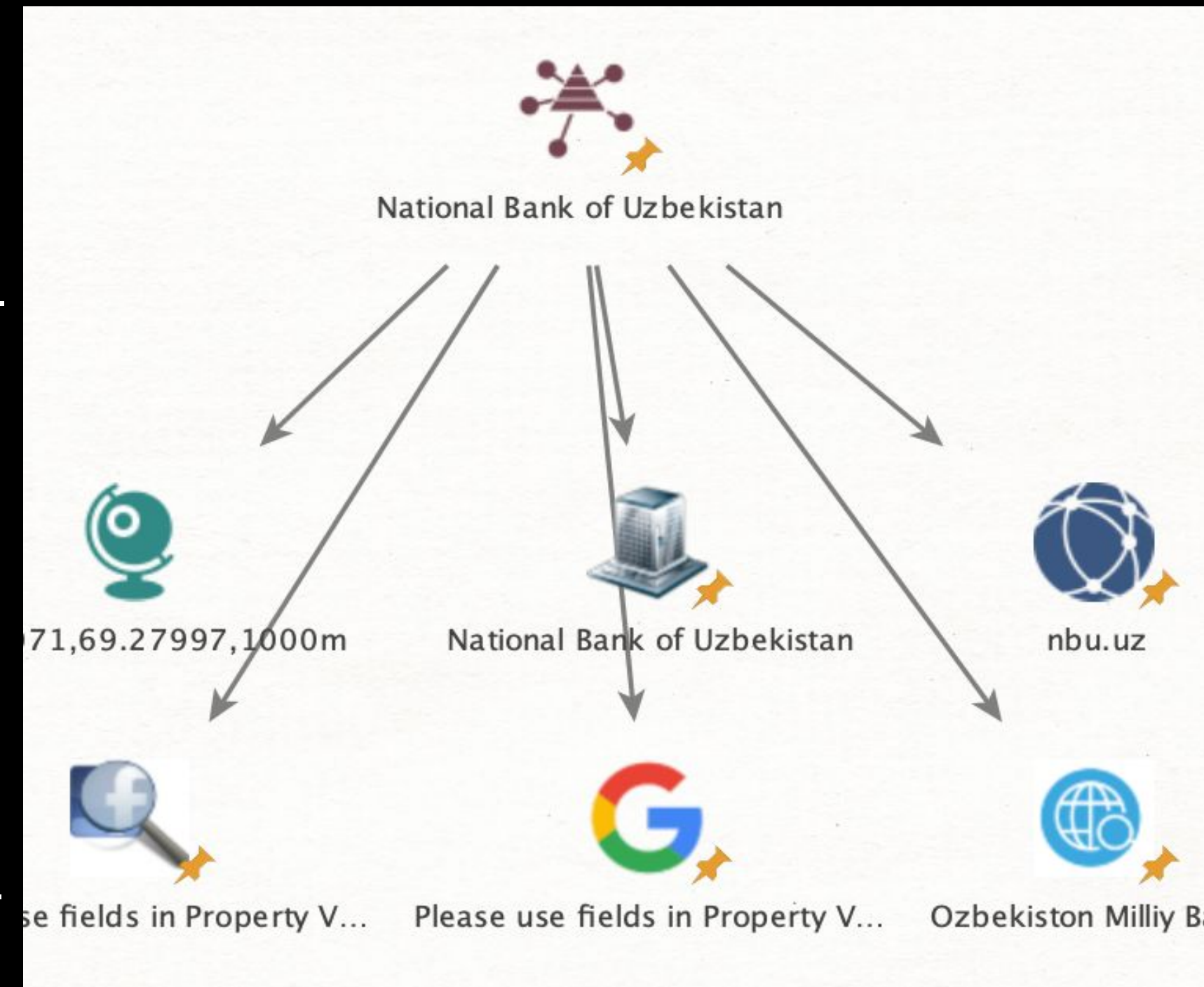
# DUE DILIGENCE CASE

## Due Diligence on a National Bank.

The case demonstrates how it is possible to collect a wide range of pieces of information that can be analyzed and used for Due Diligence, to reduce the risk indicators with a company with red flags.

The goals:

- Make an investigation that provides the customer with information that helps or simplifies the decision-making process within the context of an acquisition or other transaction with a company.
- Make Due Diligence of a company - an all-around data assessment of an organization - to look for red flags and risk indicators.
- Gather information from a huge amount of sources, such as social media posts, articles in newspapers, researches, and more.



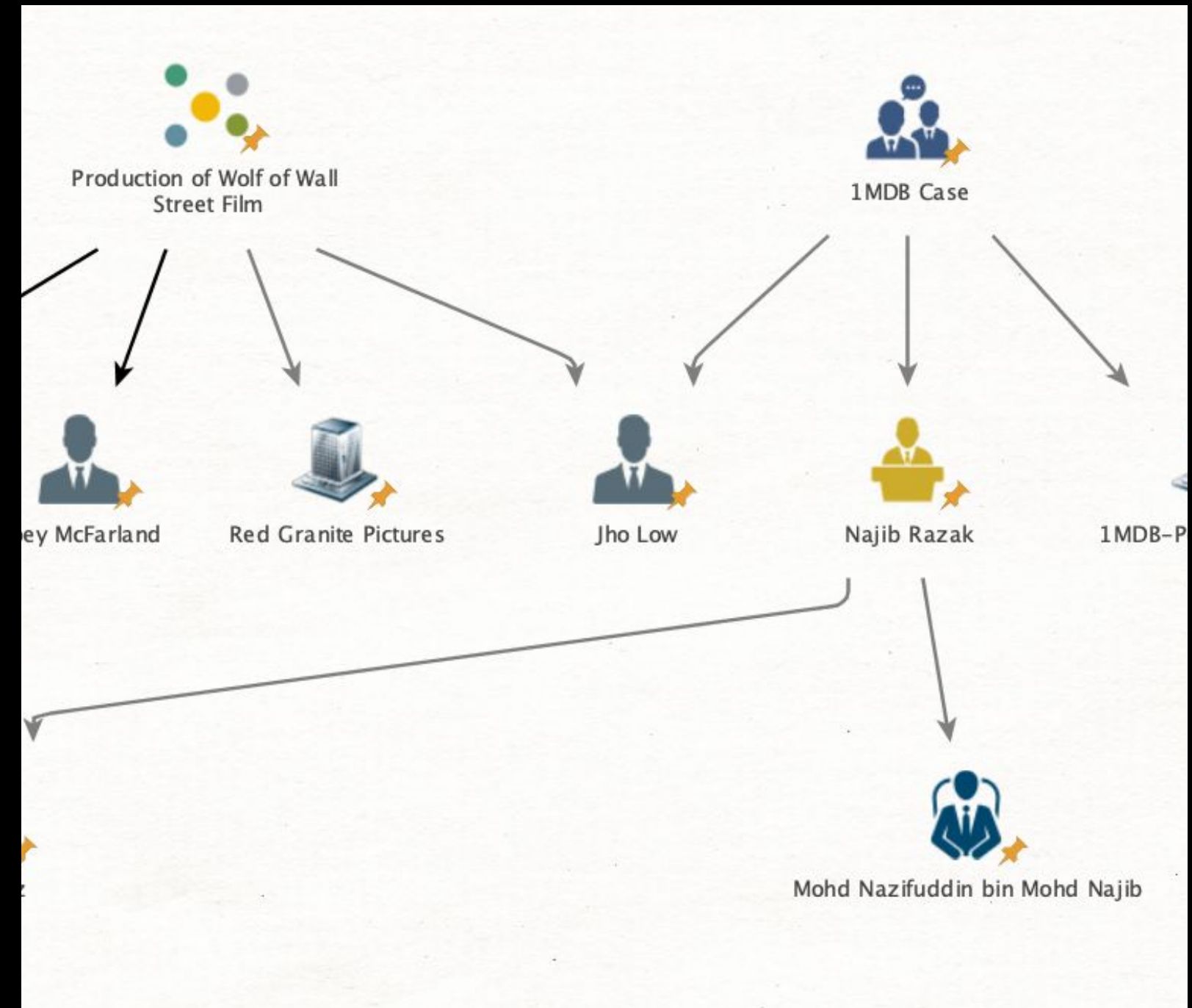
# EMBEZZLEMENT CASE

About the 1MDB case, a large embezzlement scandal involving government development funds in Malaysia and the production of the famous film "The Wolf of Wall Street,"

The case demonstrates how it is possible to collect a wide range of pieces of information regarding a company or some people of interest, using different sources such as OpenCorporates, CompanyHouse, Sanctions, Offshores and OCCRP.

The goals:

- To find some documents common to all the Person of Interest mentioned in the graph.



# DEMO

 SOCIAL LINKS



# PRODUCT PORTFOLIO

 SOCIAL LINKS

Our products include the SaaS open data intelligence solutions for Maltego and i2 **SL Professional**, as well as a standalone on-premise investigation hub solution **SL Private Platform**.



## **SL PROFESSIONAL**

**MALTEGO AND i2**

OSINT Tool for conducting in-depth investigations across social media, blockchains, messengers, and the Dark Web in Maltego and i2 platforms.



## **SL PRIVATE PLATFORM**

An enterprise-grade on-premise OSINT platform with customization options, private data storage, and our widest range of search methods.



## **SL CRIMEWALL**

An all-in-one OSINT platform that automates all aspects of the intelligence cycle, from open source data collection and ML-based processing to visualisation and presentation of information in an easy-to-use form.

# CONTACT US



COSTANZA  
PIRAS

OSINT analyst  
c.piras@sociallinks.io



sociallinks.io  
hello@sociallinks.io

# Maltego

[Back TO SOCIAL MEDIA HARVESTING](#)

[GOTO PAGE 1](#)



## IKD Presentation

03 November 2023

Steffen Iwan

# About the company

## Maltego Technologies GmbH

- Located in Munich, Germany
- Founded in 2017
- 110+ Employees\*
  - As of 2023
- Serving customers
  - In over 120 countries
  - Spanning across:
    - Enterprises
    - Governments
    - NGOs



# Maltego:

## Accelerate complex OSINT investigations from hours to minutes



### ONE SIMPLE USER INTERFACE

- One UI to access all relevant data
- Easy to understand graphs
- Simple & secure investigation process

### ACCESS TO ALL OSINT DATA

- Social Media, PII, Darkweb, Crypto, Internet Infrastructure,...
- Continuous integration of new OSINT sources

### SIMPLE REPORTING & COLLABORATION

- Easily understandable reports
- Source of data simply understandable
- Secure storage of results



# Maltego:

## Accelerate complex OSINT investigations from hours to minutes



### Conduct all OSINT investigations within minutes in one User Interface

#### Social Media Investigations

- Securely access over 180 social media platforms in real time
- Stay anonymous without the need to create investigation accounts
- Continuous integration of new social media platforms

#### Darkweb Investigations

- Securely access all major dark web forums
- Understand connections between actors and posts
- Continuous integration of new dark web forums

#### Corporate Investigations

- Access over 170 jurisdictions across the world
- Easy correlation of companies and affiliated people
- Simple exploration of corporate networks and identification of beneficial ownership

#### Crypto Investigations

- Access over 10 of the biggest crypto currencies
- Simple follow the money investigations on the most popular blockchains
- Easy correlation also in big money laundering schemes

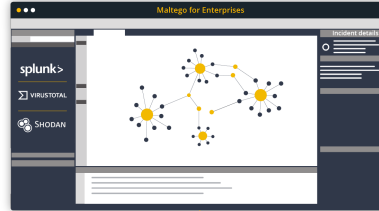
#### Cybercrime Investigations

- One click analysis of Domains, Websites, etc.
- Access to major community threat intelligence data for a quick attribution of ransomware attacks

# THE DATA PASS

Premium data at an unbeatable pricepoint

# The Maltego Data Pass



## Maltego Data Pass

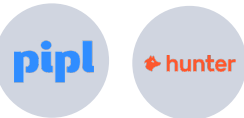
One credit-based subscription, which gives your analysts access to all data needed to accelerate Person of Interest investigations from hours to minutes.

**Includes online training course**

To understand each data sources for each investigation.

### Personal Identity Data

Connect anonymous data like phone numbers, emails and alias to real identities.



### Social Media Data

Search and profile Social Media across more than 200 social networks.



### Breach Data

Search over 1TB of publicly available breach data.



### Corporate Data

Search over 220mn companies from all major corporate registries.



### And many more

Any data that will help you to accelerate your targeted OSINT investigation.



# THE OSINT PROFILER

The fastest way to do quick OSINT lookups

### Social Media

The average person uses 8 social media platforms.

### Public data breaches

Every day there are 3,8mn data records made public.

### On public websites

There are 1.13 billion active websites on the internet.



Every target you investigate leaves traces on the web.

But they are rarely used in everyday investigations.

# The OSINT Profiler

provides access to all relevant publicly available data of a target within seconds also for non-technical users.

## Social Media

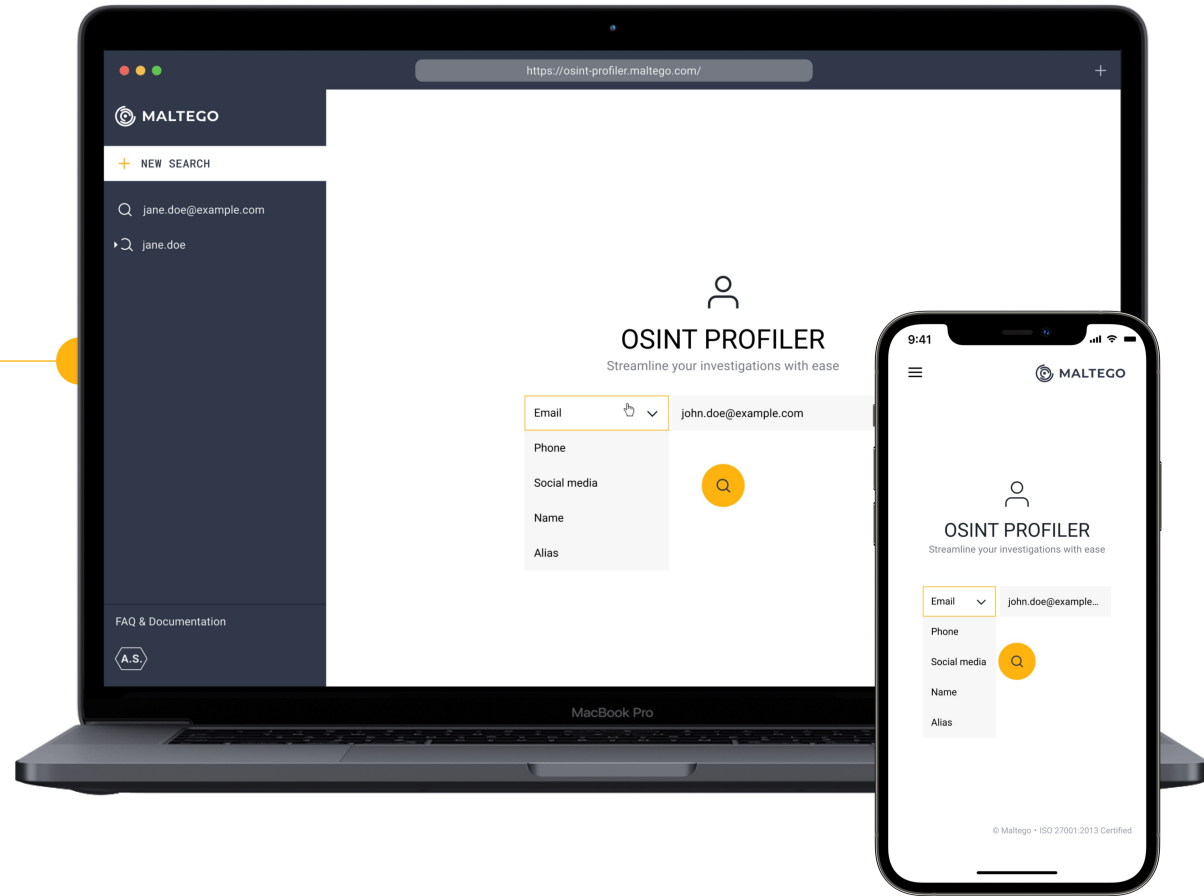
The average person uses 8 social media platforms.

## Public data breaches

Every day there are 3,8mn data records made public.

## On public websites

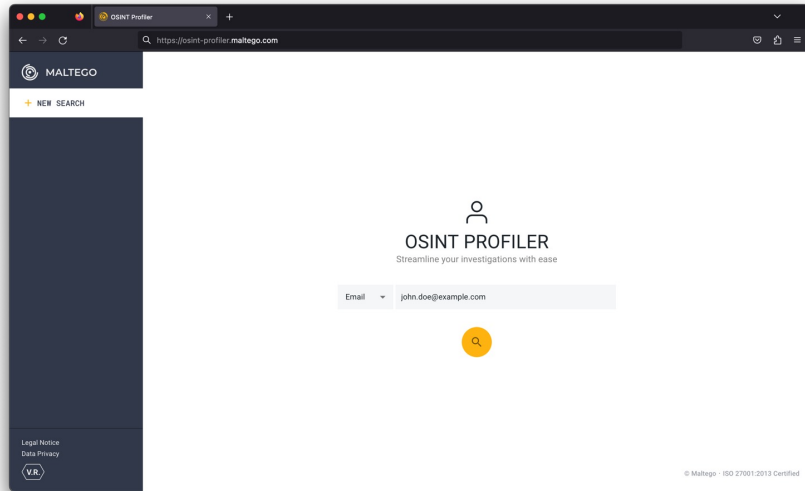
There are 1.13 billion active websites on the internet.



# The OSINT Profiler provides relevant search results within seconds

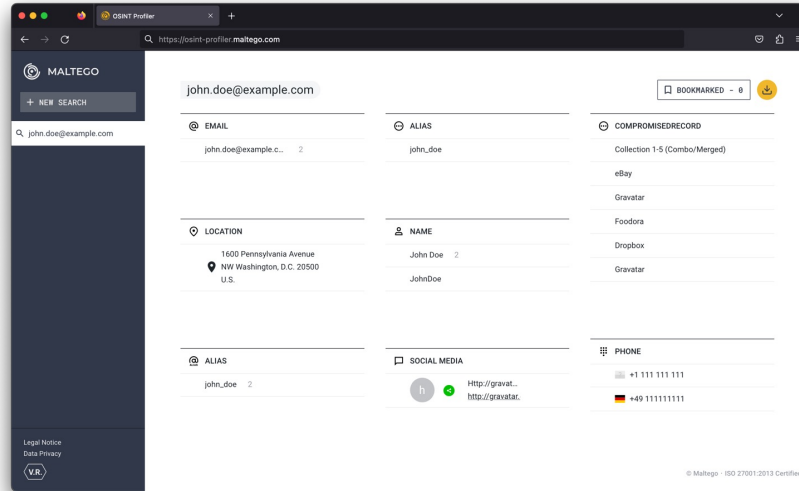
## Search

Using any start entity like phone numbers, email addresses, Social Media Profiles or Names.



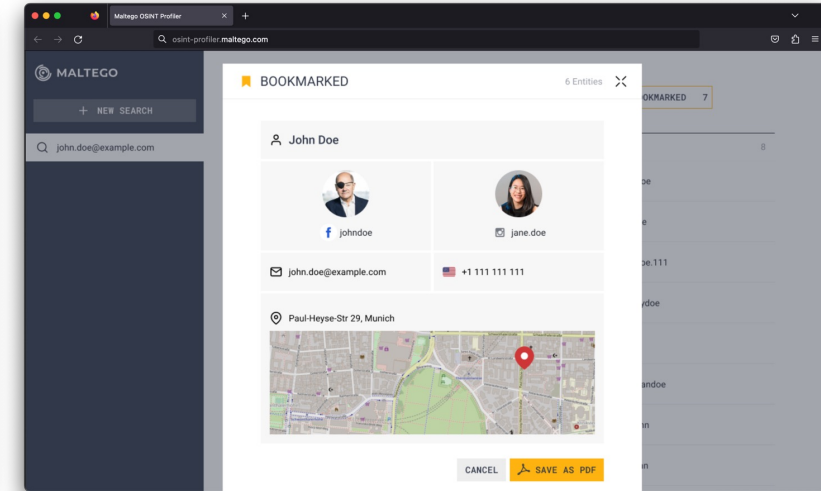
## Refine

Receive all available OSINT information clearly structured within seconds.

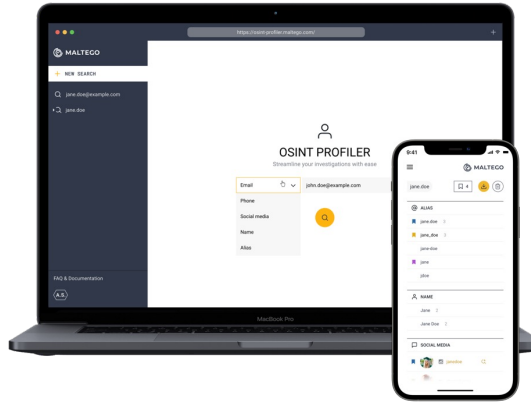


## Share

Share and save the results for further investigations or data inquiries.



# The OSINT Profiler taps into all relevant publicly available data sources



## The OSINT Profiler searches through

### 200+ SM Networks

From the big Social Networking sites, like Facebook, Instagram, Snapchat, Youtube to the niche ones like OK, VK or Okcupid.

### 1TB of Breach Data

Including breaches going back before 2010. Only publicly available breaches are included.

### 1BN Online Identities

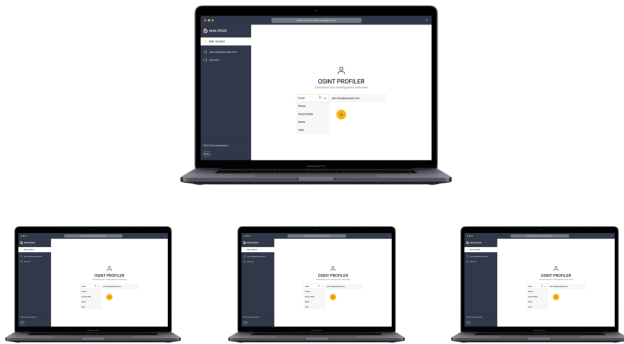
Covering the most known sources such as public registries, etc.



# The technical setup of the OSINT Profiler ensures: simple deployment, fast results and operational security

## Customer

The OSINT Profiler is a browser application, which ensures easy deployment, anonymity of requests and secure OSINT investigations.



## Running locally in the browser

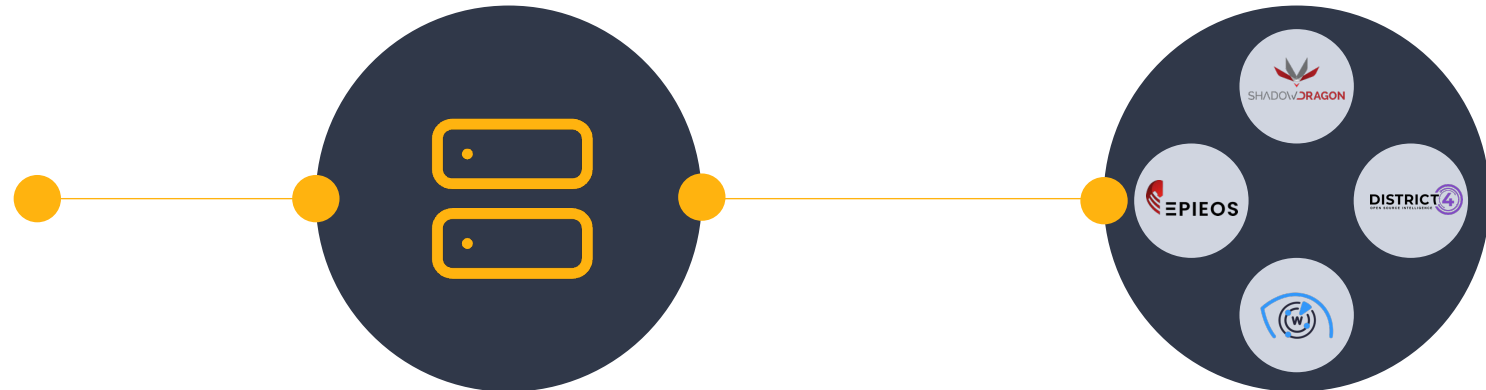
The OSINT Profiler can be accessed via any internet browser on any laptop or mobile device.

All search results are saved locally in the browser's cache. Neither Maltego nor the data partners see the saved search results.

An administrator can invite an unlimited amount of end users in the organization. The limitation is the amount of searches an organization can execute per month.

## Maltego

The servers hosted by Maltego ensure fast responses, clear data lineage as well as anonymity for the end customer.



## Executing queries & merging results

Any search conducted in the OSINT Profiler will be executed on Maltego Technology hosted servers.

The searches are executed via existing Maltego Transforms, which means that neither the inputs nor the results are being logged.

More details can be seen here:  
<https://docs.maltego.com/support/solutions/articles/15000011924-what-gets-logged-when-i-run-a-transform->

## Data Partners

Maltego leverages multiple data partners to ensure high quality search results, up to date OSINT data and continuous improvement of search methods.

## Retrieval of results

Maltego works with a variety of data partners to ensure up to date search methods across a breath of Social Media, Breach and Website Data.

The data partners APIs are called by the Maltego servers to retrieve the data. This means the data partners will have no information who the end customer of the query is.

Partners used as of Sep 7<sup>th</sup> 2023:  
Shadowdragon, District 4, Epieos, IPQS, Whoisxml